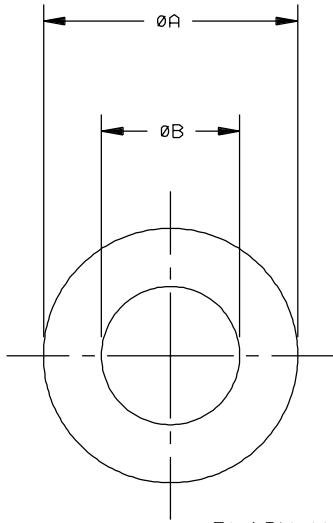


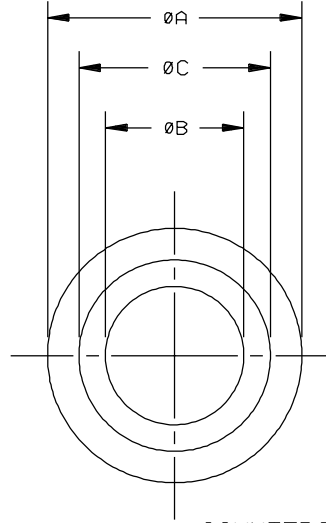
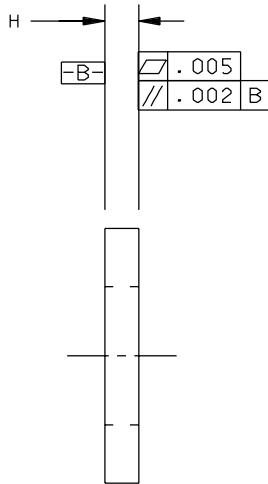


PROPRIETARY INFORMATION  
INFORMATION ON THIS DOCUMENT IS A  
TRADE SECRET, PROPRIETARY, AND  
SHALL NOT BE USED OR REPRODUCED IN  
WHOLE OR IN PART WITHOUT WRITTEN  
AUTHORIZATION OF SPS TECHNOLOGIES

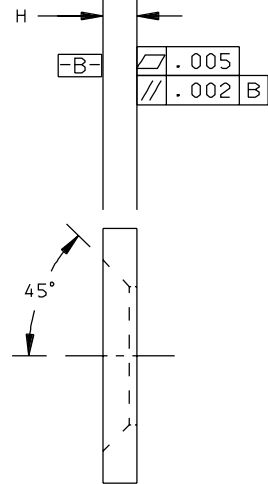
DRAWING NUMBER  
**SPS-W-96344**  
ISSUE DATE  
5/12/03  
REVISION



PLAIN WASHER



COUNTERSUNK WASHER



DASH NUMBER	NOM BOLT SIZE	ØA	ØB	C ±.006	H
-3	.1900	.312 .303	.195 .191	.212	.069 .057
-4	.2500	.375 .365	.255 .251	.272	.069 .057
-5	.3125	.469 .457	.318 .314	.341	.069 .057
-6	.3750	.562 .550	.380 .376	.409	.085 .071
-7	.4375	.656 .642	.443 .439	.478	.085 .071
-8	.5000	.750 .735	.505 .501	.546	.085 .071
-9	.5625	.843 .827	.568 .564	.613	.085 .071
-10	.6250	.938 .921	.631 .627	.683	.085 .071
-12	.7500	1.125 1.107	.756 .752	.822	.085 .071
-14	.8750	1.312 1.293	.881 .877	.957	.085 .071
-16	1.0000	1.500 1.479	1.006 1.002	1.094	.119 .099
-18	1.1250	1.688 1.665	1.131 1.127	1.229	.119 .099
-20	1.2500	1.875 1.852	1.256 1.252	1.364	.119 .099
-22	1.3750	2.062 2.038	1.381 1.377	1.499	.119 .099
-24	1.5000	2.250 2.224	1.506 1.502	1.634	.119 .099

1. MATERIAL: A286 PER CHEMISTRY OF AMS 5853 OR AMS 5525.
2. HEAT TREATMENT: 34-46 HRC.
3. FINISH: PASSIVATE PER AMS-QQ-P-35.  
CADMIUM PLATE PER AMS-QQ-P-416, TYPE II, CLASS 2.  
SILVER PLATE PER AMS 2411 (.0002/.0006 THICK).
4. MAGNETIC PARTICLE INSPECT 100% PER ASTM E 1444, EXCEPT OMIT IDENTIFICATION. ACCEPTANCE CRITERIA PER SPS-I-629, TYPE I.
5. PART NUMBER: 96344( ) ( ) ( )

"E" = CADMIUM PLATE  
"S" = SILVER PLATE  
NO LETTER = PASSIVATE  
SIZE PER TABULATION  
"C" = COUNTERSUNK WASHER  
"P" = PLAIN WASHER  
BASIC PART NUMBER

EXAMPLE: 96344C-24 = COUNTERUNK WASHER, PASSIVATED, FOR USE WITH 1.5000 NOMINAL BOLT DIAMETER SHCS.  
6. THESE WASHERS ARE DESIGNED TO BE USED WITH BOLTS AND NUTS UP TO 190 KSI STRESS LEVEL AND MAXIMUM TEMPERATURES UP TO 450°F.

TOLERANCES ±.010 AND ±2°	FSCM NO. 56878
SURFACE ROUGHNESS 125	CUSTODIAN: JENKINTOWN, PA.
UNLESS OTHERWISE NOTED	
DRAFTED IN ACCORDANCE WITH ASME Y14.5M	
DRAWN BY: KATHY SCHWARTZ	DATE: 5/12/03
APPROVED: S FOSTER	DATE: 6/02/03
APPROVED: L KLINE	

TITLE

WASHER, CLOSE TOLERANCE  
PLAIN AND COUNTERSUNK  
FOR USE WITH 1960 SERIES SHCS

STANDARDS AND SPECIFICATIONS

SPS-W-770

PART NUMBER:

96344( ) ( ) ( )

SHEET 1 OF 1